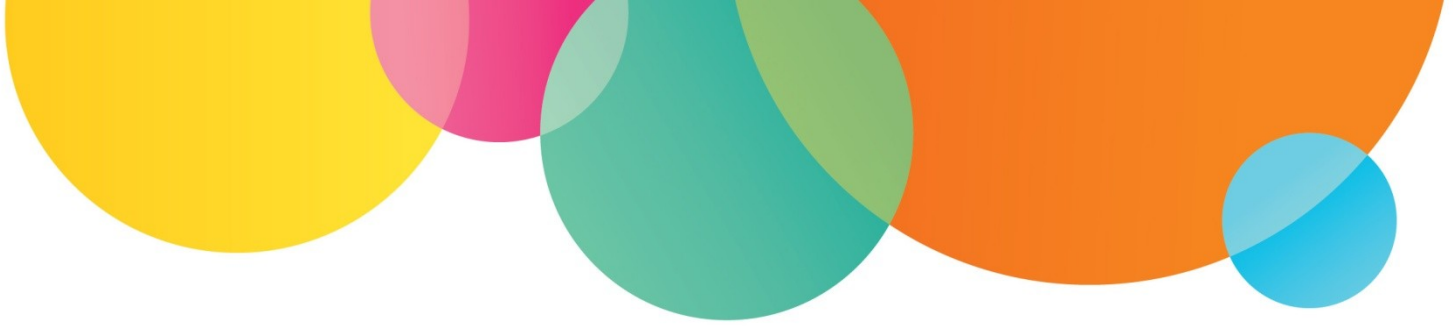




Guidance for application to install hard standing, driveway or path

- The standard of workmanship must be to the satisfaction of Ongo Homes, and carried out by qualified and competent trade person. A permission form must be completed including a sketch of the proposed layout and written method statement.
- The asbestos report must be checked to ensure Asbestos Containing Materials' (ACM's) are not being removed or encapsulated. Any removal required will be undertaken by Ongo Homes at your expense.
- Local Authority planning user and building regulations must be satisfied and provided upon application.
- Drop kerb and licenses to cross footpath must be sought from the Local Authority prior to permission being granted. It is recommended to make enquires about costs before application.
- Front gardens must have adequate space to safely allow for parking: 5.5 meters from the edge of the path to the front of the property.
- Regard should be made to potential impact upon electric, plumbing and drainage.
- All relevant safety compliance certificates must be provided upon completion of the works.
- All rubbish and debris relating to the works must be removed by the tenant to an appropriate disposal or recycling facility.
- Consideration of applications on party access properties will be made on a case by case basis to minimise potential disruption to other residents.
- No costs in connection with the work to be incurred by Ongo Homes.
- The work must be completed within 3 months of the initial request. Failure to do so will mean you having to apply again for permission.
- Once completed Ongo Homes will inspect the completed work and if the work is not completed to an appropriate standard may recharge to complete any remedial work required.
- Upon approval of works, Ongo Homes will accept future responsibility for the maintenance of the alteration, but will only maintain with our standard stock.
- Any alterations must remain in place upon vacation of the property.



•